

BRITISH



DESIGNED



ROYAL

PREMIUM VINYL FLOOR



BRITISH

DESIGNED



ROYAL

PREMIUM VINYL FLOOR

34 Soi Bangna-Trad 56,  
Debaratana Rd., Bangna,  
Bangkok 10260 Thailand  
Tel : 02-751-4001  
Fax : 02-316-2374

Email : [admin@trueconnection.co.th](mailto:admin@trueconnection.co.th)  
Website : [www.royalpremiumfloor.com](http://www.royalpremiumfloor.com)  
Line Id : @trueconnection

Royal Floor was inspiration from queen victoria era of england. Combination of romance classic mood with elegant of original british style. Expression of love, warmness, gentle and modern contemporary style. Structural design of 19-th century in industrial revolution period which come up with new innovative flooring idea.

Royal Floor syndicate british deign with beauty of nature to create exclusive, treasured and passionate for our vinyl floor.

Royal Floor is selection of art luxury vinyl tiles collection offers the natural beauty of real wood to life in your home. esthetics of realistic, natural wood whilst giving you the advantages of strong and durable vinyl: warm underfoot; sound absorbing, tough & durable, with easy installation & maintenance.

Smart click locking system

click locking systems is one of the most used and appreciated systems in the world.

Strong and robust mechanical, glue-free, locking system installed by angling of both long and short side or by fold down for even faster and easier installation.

Välinge's 2g

royal floor is authorize 2g system by välinge, which is one of the best locking system in the world with worldwide premium standard.

designed with parallel surfaces for robustness and easy production, minimized risk of squeaking sounds and with a high locking angle for high pulling strength witch generate perfect joint.



Royal Premium Vinyl Floor

BRITISH

DESIGNED



ROYAL PRODUCTS

TABLE CATAGORIES

WPC

WOOD PLASTIC COMPOSITE

04



SPC

STONE PLASTIC COMPOSITE

12



LVT

STANDARD GLUE

20



INSTALLATION  
MAINTENANCE

26



PRODUCT DETAIL

Type	WPC	SPC Click	SPC Click Stone	LVT Glue	LVT Glue Stone
Installation Method	Click	Click	Click Stone	Glue Down	Glue Down
Material	WPC	SPC	SPC	LVT	LVT
Total Thickness	7.0 mm	5.3 mm	5.3 mm	3.3 mm	3.3 mm
Core Layer	LVT 1.2 mm + WPC 4.0 mm	SPC 4.0 mm	SPC 4.0 mm	LVT 3.0 mm	LVT 3.0 mm
Underlay	IXPE 1.5 mm	EVA 1.0 mm	EVA 1.0 mm	-	-
Wear Layer	0.3 mm	0.3 mm	0.3 mm	0.3 mm	0.3 mm
Size (inch)	9 x 56	7.25 x 48	12 x 24	6 x 36	12 x 24
Size (mm)	225 x 1420	180 x 1220	300 x 600	152.4 x 914.4	304.8 x 609.6
Sqm/Pcs	0.320	0.219	0.185	0.139	0.186
Pcs/Box	8	10	12	24	18
Sqm/Box	2.56	2.19	2.22	3.34	3.34
Kgs/Box	17.88	17.65	17.85	19.33	19.35
Size of box (mm)	240x1435x60	194x1235x53	322x614x63	160x923x75	313x618x57



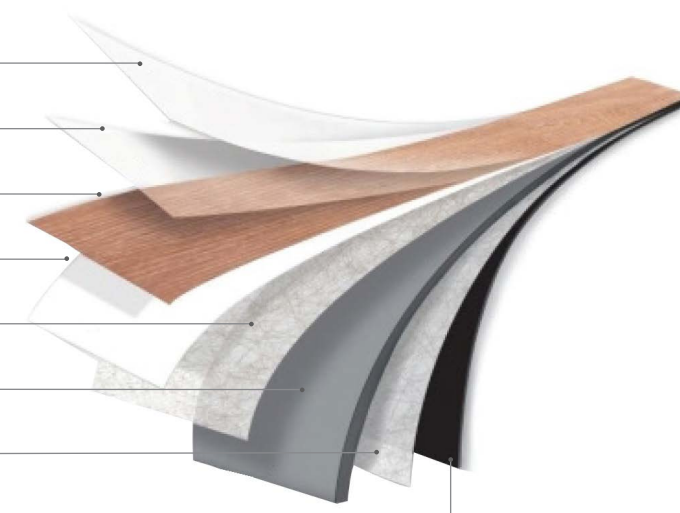


# WPC

WOOD PLASTIC COMPOSITE

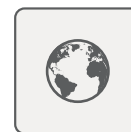
## STRUCTURE

- 1 UV Surface Treatment
- 2 WEAR Layer
- 3 PRINTING Film Layer
- 4 LVT Layer
- 5 PUR Glue
- 6 WPC
- 7 IXPE Glue
- 8 IXPE



## FEATURES

- 80° C/6 HOURS test : pass
- Effect of castor chair : 35000 circle no damage
- Low residual indentation, protecting your floor from potential damage.
- Impact sound reduction : 22dB



ECO-Friendly



Easy Installation



Wear Resistant



Waterproof



Sunlight From Window



Anti-Slip



Easy Maintenance



Compressive

PURE NATURAL DESIGN  
BY EMBOSS REGISTER







SPECIFICATION

CLICK	2G/2G	2G/5G
6.5(4.0+1.5+1.0)/0.30mm	6"*48" 7.25"*48" 12"*24" 9"*56"	9"*56"
6.5(4.0+1.5+1.0)/0.30mm		

WPC  
STRUCTURE

T.THICKNESS	WEAR LAYER	PRODUCT SIZE
7.0 mm	0.3 mm	225x1420mm

225 x 1420MM

TEST ITEM	TEST METHOD	STANDARD	WPC
Overall Thickness	ISO 24346	avg: N+0.13mm/-0.1mm Max: N±0.15mm	5.5WPC+1.0mmIXPE
Thickness of wear layer	ISO 24340	N±0.02mm	0.5
Mass per unit area	ISO 23997	N+13%/-10%	6.7kg/m2
Dimensional stability and curling after exposure to heat	ISO 23999	0.20% curling±1.2mm	0.15% curling:0.75mm
Residual indentation	ISO 24343-1	0.10mm	0.10mm
Effect of castor chair	ISO 4918	pass (25000r)	PASS
Colour fastness to artifical light	ISO 105-B02, Method 3	≥6	6
Button type tension	ISO 10582 Annex D	≥120N/5CM	250N/5cm
Stripping resistance	ISO 24345	≥60N/5CM	70N/5cm
Flatness	ISO 10582 Annex B	≥0.5(%of the Length) ≥0.1(% of the width)	0.05% 0.04%
Flat-fell-seam	ISO 10582 Annex C	0.10MM	0.05
Height difference	ISO 10582 Annex C	0.10MM	0.05
Wear group	EN-660-2	T	T
Classification	ISO 10582	Transparently	Class 33 Class 42
Effect of stains	EN423:2001 ISO26987:2008	Not affected	Not affected
Sound insulation	ISO 10140-3 ISO717-2:1996	22dB	22dB
Reaction to fire	EN 13501-1	B fl-s 1	B fl-s 1
Content of pentachlorophenol (PCP)	Laminate as per CEN/TR 14823, textile as per CEN/TS 14494, Resilient floor not required	ND (not detected)	ND (not detected)
Formaldehyde emission	EN 717-1	PASS (below E1)	PASS (below E1)
Slip resistance	EN 13893	Class DS (u ≥0.3)	Class DS (u ≥0.3)
The body voltage	EN 1815	≤2.0kv	≤2.0kv
Vertical resistance	EN 1081	>3x1010Ω	>3x1010Ω
Resistance	ISO 8302	0.0245(m2-k)/w	0.0245(m2-k)/w
Heavy metal	EN 71-3-2013	ND (not detected)	ND (not detected)
Phthalate tests	EN 14372:2004 CPSC-CH-C1001-09-3	ND (not detected) ND (not detected)	ND (not detected) ND (not detected)
PAHs	AfPS GS 2014:01 PAK	ND (not detected)	ND (not detected)
VOCs	ASTM DS116/ISO 16000	A+	A+
SVHC released	EU REACH Regulation No.1907/2006 Article 33	ND (not detected)	ND (not detected)
Specific optical density of smoke	ASTM E662	Flam: <450 Flamless: <450	Flam: <450 Flamless: <450
Critical radiant flux	ASTM E648	Class 1	Class 1





BRITISH DESIGNED

WPC

WOOD PLASTIC COMPOSITE



PURE NATURAL DESIGN



RF-WPC-01B



RF-WPC-01N







RF-WPC-01W



RF-WPC-02W



RF-WPC-04N



RF-WPC-05N





### SPC STRUCTURE

T.THICKNESS	WEAR LAYER	PRODUCT SIZE
5.3 mm	0.3 mm	180x1220 mm
		SPC Stone 300x600mm

- Sound absorption
- Excellent performance on shrinkage and warpage properties
- Easy installation

ROYAL 13  
STONE PLASTIC COMPOSITE

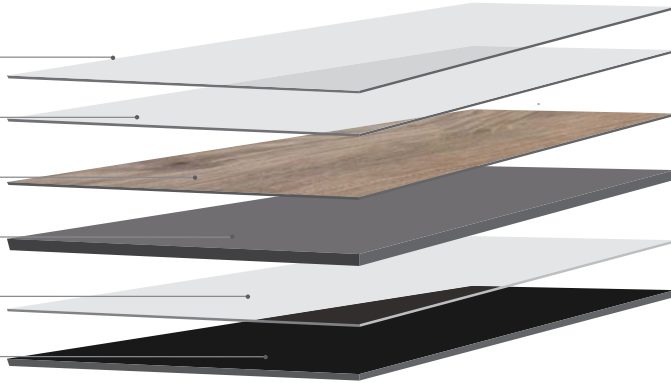
BRITISH DESIGNED

SPC

STONE PLASTIC COMPOSITE

### STRUCTURE

- 1 UV Surface Treatment
- 2 WEAR Layer
- 3 PRINTING Film Layer
- 4 RIGID CORE Layer
- 5 GLUE Layer
- 6 IXPE CUSHION Layer



TEST ITEM	TEST METHOD	STANDARD	SPC
Overall Thickness	ISO 24346	avg: N+0.13mm/-0.1mm Max: N±0.15mm	4.5+1.0mmIXPE
Thickness of wear layer	ISO 24340	N±0.02mm	0.5
Mass per unit area	ISO 23997	N+13%/-10%	9.8kg/m2
Dimensional stability and curling after exposure to heat	ISO 23999	<<0.12% curling±1.2mm	0.05% curling:0.25mm
Residual indentation	ISO 24343-1	<<0.15mm	0.10mm
Effect of castor chair	ISO 4918	pass (25000r)	PASS
Colour fastness to artificial light	ISO 105-B02, Method 3	≥6	6
Button type tension	ISO 10582 Annex D	≥120N/5CM	250N/5cm
Stripping resistance	ISO 24345	≥60N/5CM	75N/5cm
Flatness	ISO 10582 Annex B	≥0.5(% of the Length) ≥0.1(% of the width)	0.05% 0.03%
Flat-fell-seam	ISO 10582 Annex C	<<0.10MM	0.05
Height difference	ISO 10582 Annex C	<<0.10MM	0.05
Wear group	EN-660-2	T	T
Classification	ISO 10582	Transparently	Class 33 Class 42
Effect of stains	EN423:2001 ISO26987:2008	Not affected	Not affected
Sound insulation	ISO 10140-3 ISO717-2:1996	19dB	19dB
Reaction to fire	EN 13501-1	B fl-s 1	B fl-s 1
Content of pentachlorophenol (PCP)	Laminate as per CEN/TR 14823, textile as per CEN/TS 14494, Resilient floor not required	ND (not detected)	ND (not detected)
Formaldehyde emission	EN 717-1	PASS (below E1)	PASS (below E1)
Slip resistance	EN 13893	Class DS (u ≥0.3)	Class DS (u ≥0.3)
The body voltage	EN 1815	≤2.0kv	≤2.0kv
Vertical resistance	EN 1081	>3x1010Ω	>3x1010Ω
Thermal conductivity/resistance	ISO 8302	0.422w/(m•k) 0.047 (m2•k)/w	0.422w/(m•k) 0.047 (m2•k)/w
Heavy metal	EN 71-3-2013	ND (not detected)	ND (not detected)
Phthalate tests	EN 14372:2004	ND (not detected)	ND (not detected)
PAHs	CPSC-CH-C1001-09-3	ND (not detected)	ND (not detected)
PAHs	AFPS GS 2014:01 PAK	ND (not detected)	ND (not detected)
VOCS	ASTM D5116/ISO 16000	A+	A+
SVHC released	EU REACH Regulation No.1907/2006 Article 33	ND (not detected)	ND (not detected)
Specific optical density of smoke	ASTM E662	Flam: <450 Flamless: <450	Flam: <450 Flamless: <450
Critical radiant flux	ASTM E648	Class 1	Class 1



ECO-Friendly



Easy Installation



Wear Resistant



Waterproof



Sunlight From Window



Anti-Slip



Easy Maintenance



Compressive



# SPC

STONE PLASTIC COMPOSITE

## SPECIFICATION

CLICK	2G/2G			2G/5G
3.4/0.30 mm+0.6 mm IXPE	6"*36"	7.25"*48"	12"*24"	9"*56"
4.0/0.3 mm+1.0 mm IXPE	6"*36"	7.25"*48"	12"*24"	9"*56"
4.0/0.5 mm+1.0 mm IXPE	6"*36"	7.25"*48"	12"*24"	9"*56"
4.5/0.3 mm+1.0 mm IXPE	6"*36"	7.25"*48"	12"*24"	9"*56"
4.5/0.5 mm+1.0 mm IXPE	6"*36"	7.25"*48"	12"*24"	9"*56"
5.0/0.5 mm+1.0 mm IXPE	6"*36"	7.25"*48"	12"*24"	9"*56"
5.0/0.7 mm+1.0 mm IXPE	6"*36"	7.25"*48"	12"*24"	9"*56"



RF-SPC-01B



RF-SPC-01N



RF-SPC-01W



RF-SPC-02B



RF-SPC-02N



RF-SPC-02W





RF-SPC-03B



RF-SPC-03W

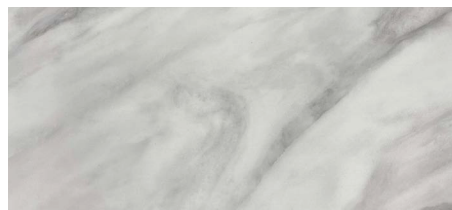


RF-SPC-04B



RF-SPC-04W





RF-SPC-01S



RF-SPC-02S



RF-SPC-03S



RF-SPC-04S



RF-SPC-05S



RF-SPC-06S



BRITISH DESIGNED

# LVT

## STANDARD GLUE

Royal Premium Vinyl Floor provides endless creative possibilities to design your own floor, with high standard of Embossing system, varying sizes, tiles, patterns and textures available to make your space a masterpiece.



### LVT STRUCTURE

T.THICKNESS	WEAR LAYER	PRODUCT SIZE
3.3 <sub>mm</sub>	0.3 <sub>mm</sub>	152.4x914.4 <sub>mm</sub>
		LVT Stone 304.8x609.6 mm





LVT

STANDARD GLUE



RF-S-01N



RF-S-01W



RF-S-02W



RF-S-03B



RF-S-03N



RF-S-03W



RF-S-04N



RF-S-04W



RF-S-05B



RF-S-05N







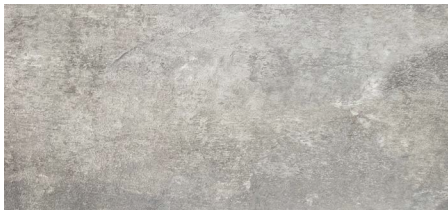
RF-S-05W



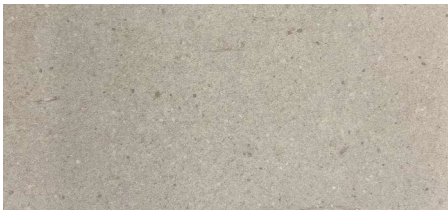
RF-S-06B



RF-S-06N



RF-S-01M



RF-S-02M



RF-S-07B



RF-S-07N



RF-S-08N



RF-S-03M



RF-S-04M





# INSTALLATION MAINTENANCE

## INSTALLATION

1. Prepare all rulers, cutters, adhesives, spreaders, and compass dividers before commencing work.
2. Check that all application products are of the same batch/lot number.
3. Find the exact center of the floor by marking vertical and horizontal lines across the floor.
4. Measure the squareness of the marked lines, and then start applying adhesives on the first quarter of the marked floor space.
5. Work on small portions of the floor at a time, and apply adhesives accordingly. Optimum usage of adhesive is 0.3 to 0.45kg per square meter.
6. Approximately 20 to 30 minutes after applying adhesive, lay the flooring products.
7. Keep a distance of 1 mm from the wall and the edge of the flooring products. Press products down firmly so that the product lies flat on the ground.
8. As the adhesives are highly flammable, avoid any contact with sparks or open flames.
9. As the adhesives dry quickly remove excess adhesive immediately by using alcohol or alkali water.

## PREPARATION

1. The surface of the floor must be completely dry. Please note that even though the floor may appear dry, it may still retain moisture.
2. In newly constructed buildings, it is necessary to dry the flooring surface for 7 to 14 days prior to application to ensure that no moisture is retained in cement surfaces.
3. Any polish, paint, dirt, etc. must be completely removed from the floor before installation. Sweep the entire floor to remove any sand, soil and debris on the surface by using a dry mop.
4. Ensure that the floor surface is flat and level. Use a scraper to flatten the floor surface or putty knife to remove gum and/or labels.
5. Maintain the room temperature above 15 °C (59°F) before installation. Adhesive and flooring products must be kept in the same environment for at least 24 hours before installation begins.
6. Use only ROYAL PREMIUM recommended adhesives.

## MAINTENANCE

1. In order to allow the flooring adhesives to be cured, restrict traffic and do not move furniture onto newly installed floor for at least 24 hours after installation. Additionally, clean the newly tiled floor at least 3 days after installation.
2. Be careful not to put any dents or marks on the floor when moving heavy furniture.
3. Furniture polish and / or rubber supports may leave stains on the floor surface over a long period of time. Check the bottom of furniture to ensure it is clean before moving it on to the floor.
4. The application of surface dressing should be done depending on the different conditions. Under high traffic conditions, the dressing should be stripped and reapplied every one or two months. However, under general housing conditions, this may only need to be done once every six months.
5. When removing stains and polish, do not use dense solvents or household cleaning fluids. Instead, use general floor polish removers and cleaners with alkali water.



# WHY ROYAL PREMIUM VINYL FLOOR

### ENVIRONMENTALLY, ECO-FRIENDLY VINYL

100 % Raw materials with no Formaldehyde and other toxic chemical for production process. Eco-Friendly for people and surrounding environment.



### SLIP RESISTANCE

Vinyl flooring has undergone considerable tests in critical conditions using both the pendulum and ramp method of slip-resistant testing and has consistently proved to be a safe solution with a strong slip rating of R10.



### HEAT INSULATION

Excellent heat insulation means that Vinyl flooring feels warm to the touch, perfect alongside under floor heating and for getting out of bed on those cold mornings.



### PROTECTIONIST PU PROTECTION

Each floor tile is protected with a Protectionist PU: Extra Polyurethane layer which protects the floor against scratches and dirt, offering maximum protection with minimum maintenance.



### SOUND-PROOF

Unlike traditional wood or laminate flooring, Vinyl Floor absorbs sound thanks to a sound-proof base, giving better acoustics in your home.



### HYGIENIC & EASY TO CLEAN

No expensive cleaning agents are required to keep your floor at its best; just a simple broom, mop and vacuum cleaner. Vinyl floor will not harbor dust mites and other allergens.



### VÄLINGE'S 2G SUPER CLICK LOCKING SYSTEM

Royal Premium Vinyl Floor offers you Välinge's 2G Super Click Locking system which is strong and durable glue-free locking system that can be installed by angling-angling. Also offers a pulling strength more than twice as high as other locking systems.

### NATURAL INSPIRATIONAL VINYL TILES

Royal Premium Vinyl Floor provides endless creative possibilities to design your own floor, with high standard of Embossing system, varying sizes, tiles, patterns and textures available to make your space a masterpiece.

### A+ INDOOR AIR QUALITY

Royal Premium Vinyl Floor using 100% pure PVC with highest quality with no Formaldehyde material to produce our products. With respect to great Air quality in your home or your workplace "A+ Indoor Air Quality (IAQ)".

### DESIGNED TO LAST

Royal Premium Vinyl Floor comes with the peace of mind of 15-year guarantee of material integrity and colors lasting under normal condition use.

### DOUBLE LAYER USED

Royal Premium Vinyl Floor offers high thickness of wear layer 0.5 mm together with double fiber glass layer, making your tiles much more protected and durable.

### NO PATTERN REPEATS

Royal Premium Vinyl Floor offers extra-long sizes we avoid pattern repeats, giving a natural feeling to your flooring.



**BRITISH**  
**DESIGNED**





BRITISH DESIGNED



The edge of Victoria era in 19th-century was the Supreme period of Industrial revolution in England. Art and Design consequently prosperous in those periods. Remarkable combination between Romance classic styles with Contemporary modern art was the key inspiration for ROYAL Premium Vinyl Floor.

ROMANCE CLASSIC MOOD STYLE

  
SINCE  
1837

[www.royalpremiumfloor.com](http://www.royalpremiumfloor.com)

